
MATERIALS:

CONCRETE: The Minimum 28 Day Strength shall be 6000 PSI
Optional: Special design mix utilizing Micro-Silica.
Optional: Corrosion inhibitor additive in lieu of epoxy reinforcing.

REBAR: ASTM A615, Grade 60
Optional: Epoxy-coated

SHOULDERS: "Pandrol" #6575 Cast
 SHOULDER DUCTILE - Iron Grade #65-45-12

RUNNING STRIPS: $\frac{3}{16}$ " UHMW Polyethylene

CLIPS: "Pandrol" #E2055 Clips-Spring Steel, Galvanized

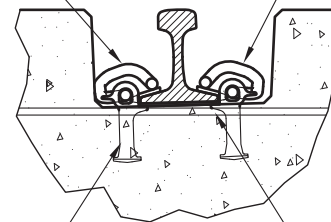
INSULATORS: "Pandrol" #7400
 Thermoplastic/Nylon

EXPOSED SURFACE: Form Cast Concrete
Optional: Hydrozo "Enviroseal" Surface Treatment

DESIGN LOADING:
 Cooper E-80 with 60% Impact

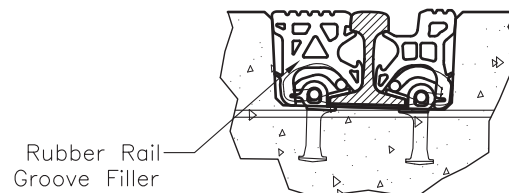
"Pandrol" Brand Rail Clip Type "E" 2055

"Pandrol" Brand Nylon Insulator #7400


Rail Detail A

"Pandrol" Brand Shoulder #6575

$\frac{3}{16}$ " UHMW Polyethylene



Rubber Rail Groove Filler

Rail Detail B